



*Psychiatric Consequences of
Methamphetamine Abuse*

Thomas E. Freese, Ph.D.

Pacific Southwest Addiction Technology Transfer Center

UCLA Integrated Substance Abuse Programs

March 30, 2004

California Addiction Training and Education Series

Pasadena, California



Why do people start using methamphetamine?

- To feel good.
- To feel better.



Methamphetamine

Acute Psychological Effects

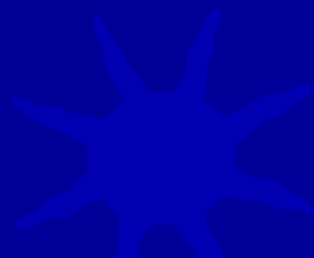
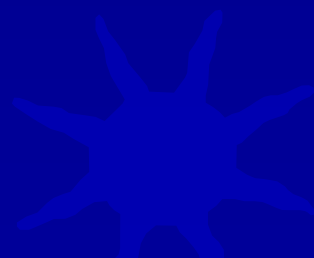
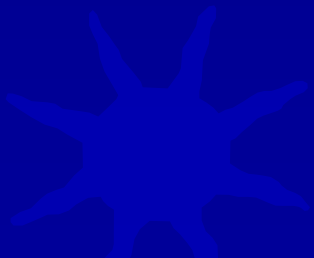
■ **Increases**

- **Confidence**
- **Alertness**
- **Mood**
- **Sex drive**
- **Energy**
- **Talkativeness**

■ **Decreases**

- **Boredom**
- **Loneliness**
- **Timidity**

*and just when you thought it
couldn't get any better...*



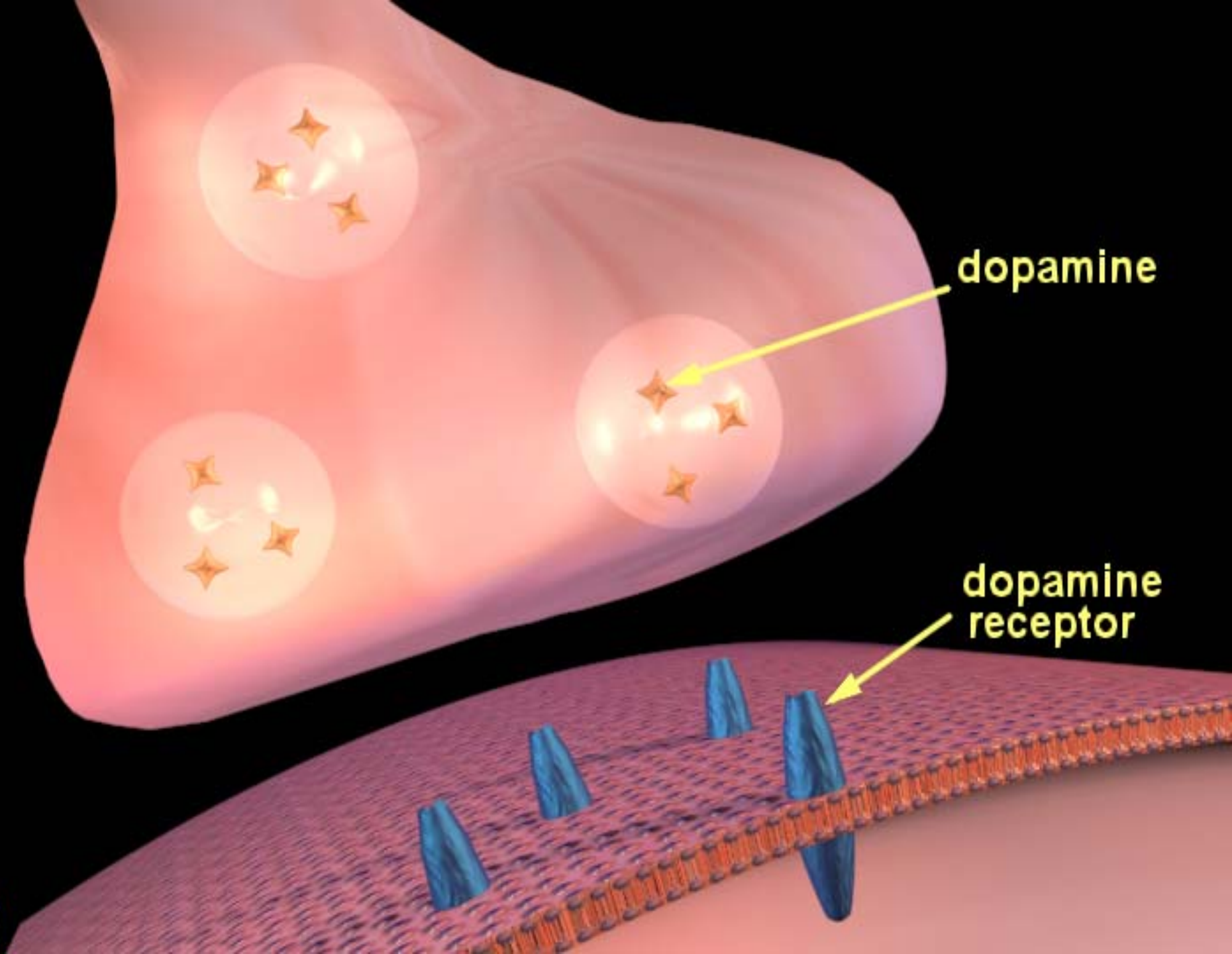


lorrylorry

Methamphetamine

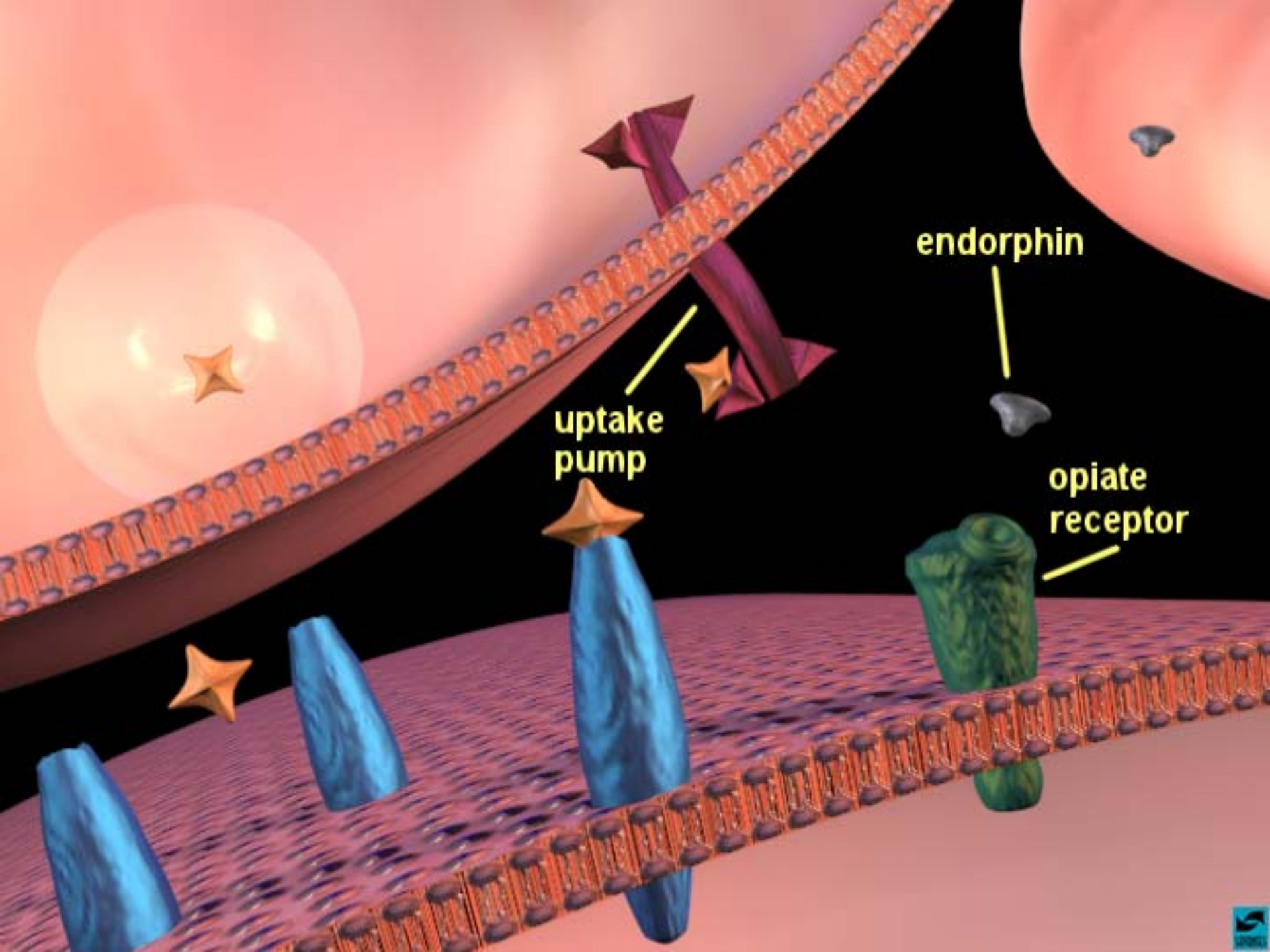
Chronic Psychological Effects

- **Confusion**
- **Concentration**
- **Hallucinations**
- **Fatigue**
- **Memory loss**
- **Insomnia**
- **Irritability**
- **Paranoia**
- **Panic reactions**
- **Depression**
- **Anger**
- **Psychosis**



dopamine

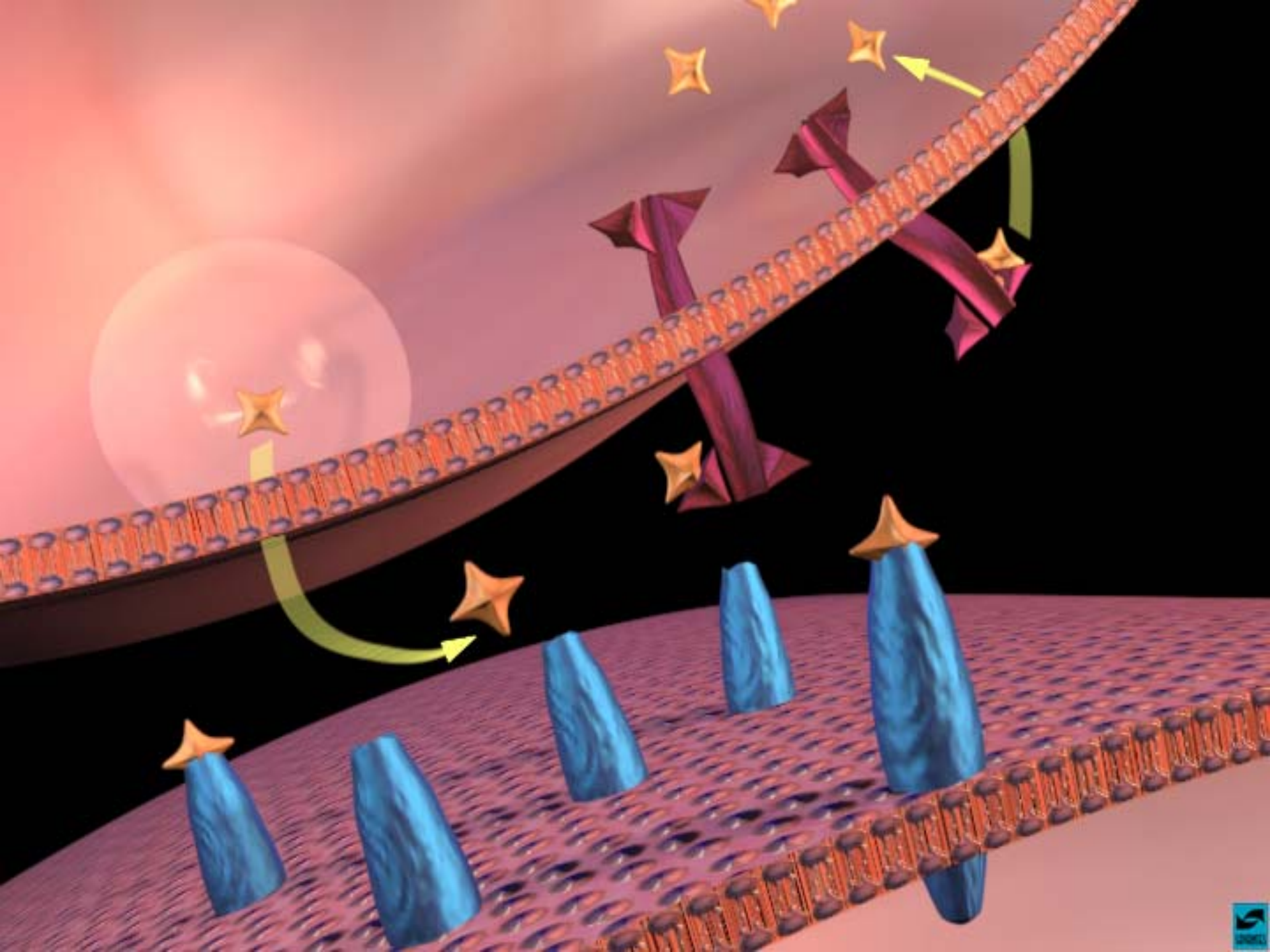
dopamine
receptor

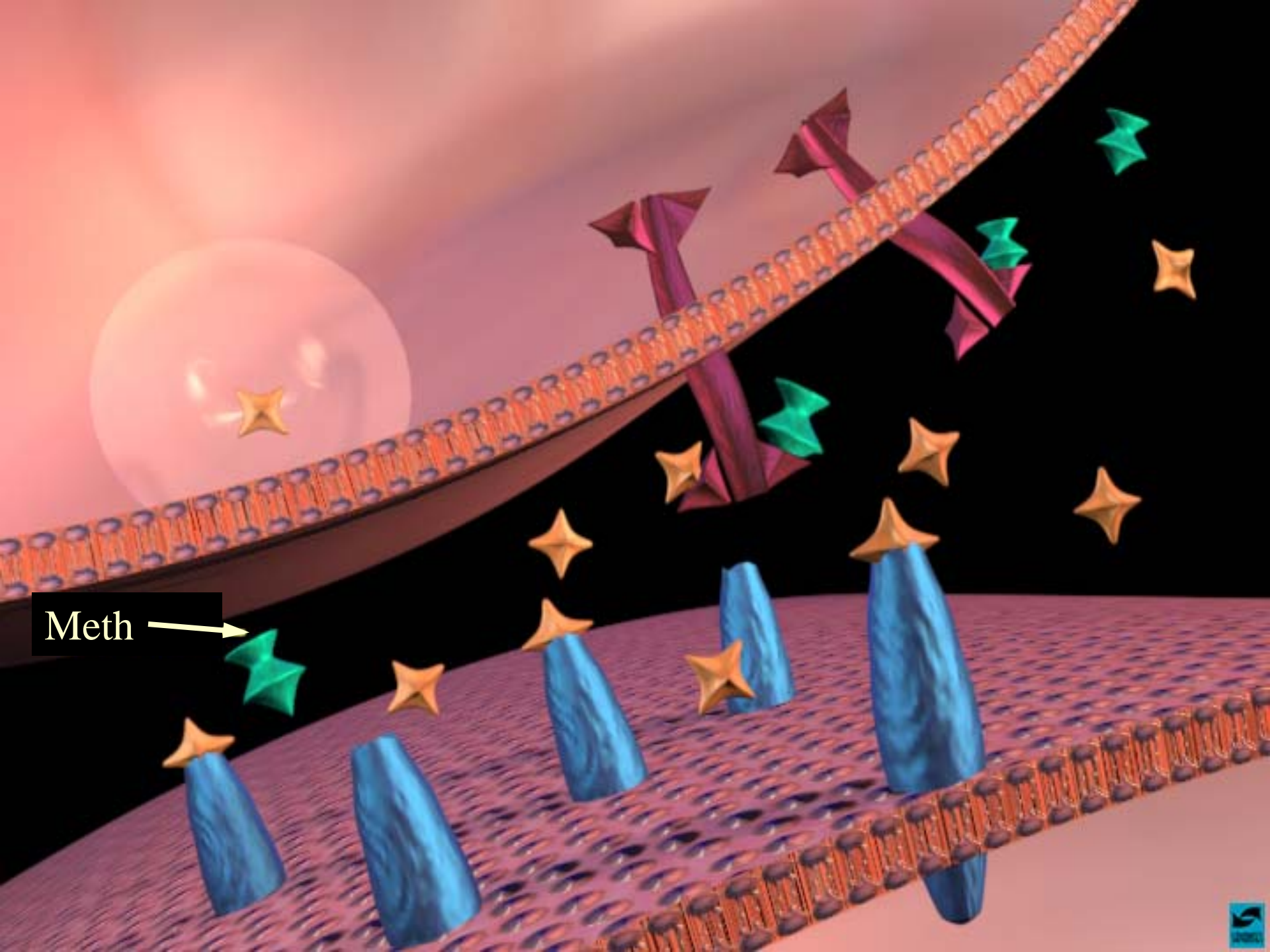


endorphin

uptake pump

opiate receptor





Meth



Methamphetamine

Psychiatric Consequences

- Paranoid reactions
- Memory loss
- Depressive reactions
- Hallucinations
- Psychotic reactions
- Panic disorders
- Rapid addiction

Depletion of dopamine...

- One consequence is depression
 - Completing the withdrawal process and ongoing drug treatment may resolve the depression
 - Monitor for suicidal thoughts/behavior
 - If depression continues, it should be treated
 - Consider behavioral therapies to address depression
 - Consider psychotropic medications

Acute MA Psychosis

- Extreme Paranoid Ideation
- Well Formed Delusions
- Hypersensitivity to Environmental Stimuli
- Stereotyped Behavior “Tweaking”
- Panic, Extreme Fearfulness
- Potential for Violence

Treatment of MA Psychosis

- Typical ER Protocol for MA Psychosis
 - Haloperidol - 5mg
 - Clonazepam - 1 mg
 - Cogentin - 1 mg
 - Quiet, Dimly Lit Room
 - Restraints



*Cognitive Impairment in
Individuals Currently Using
Methamphetamine*

Sara Simon, Ph.D.

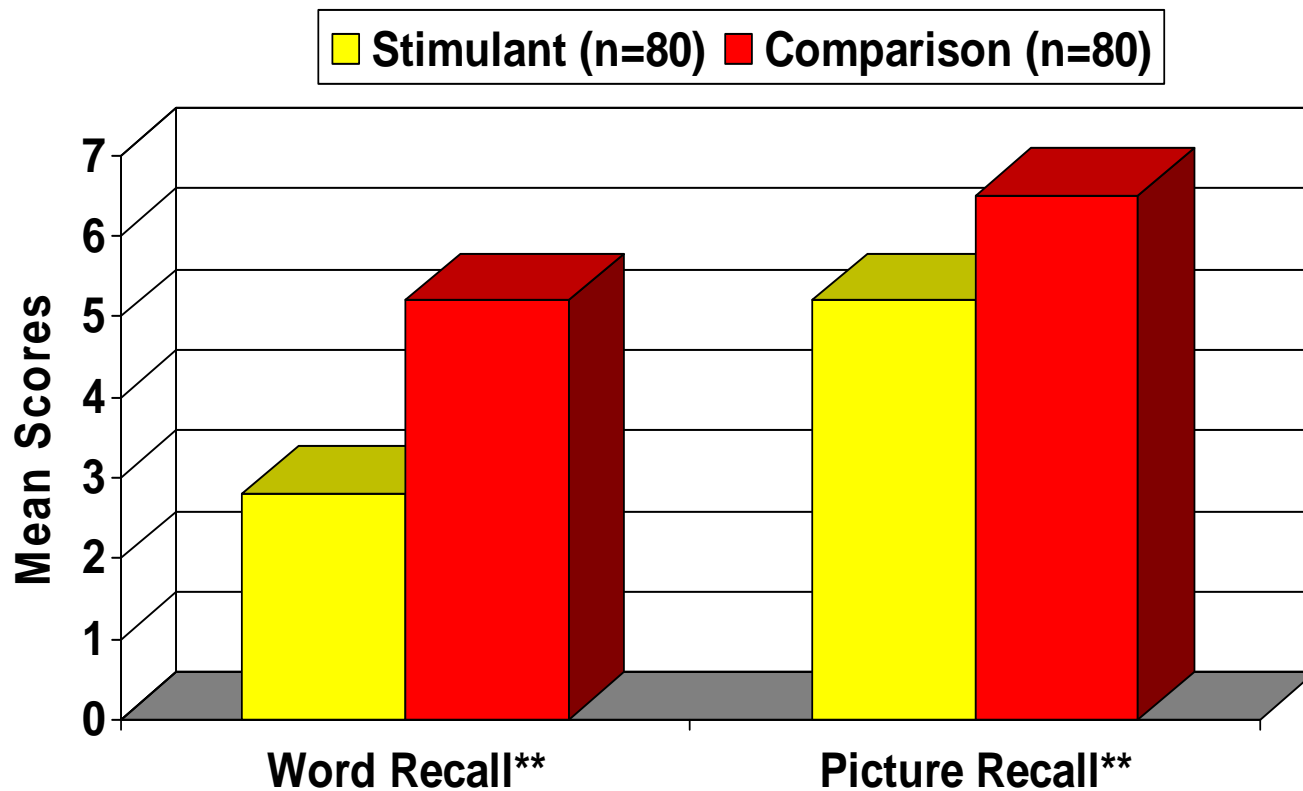
VA MDRU

Matrix Institute on Addictions

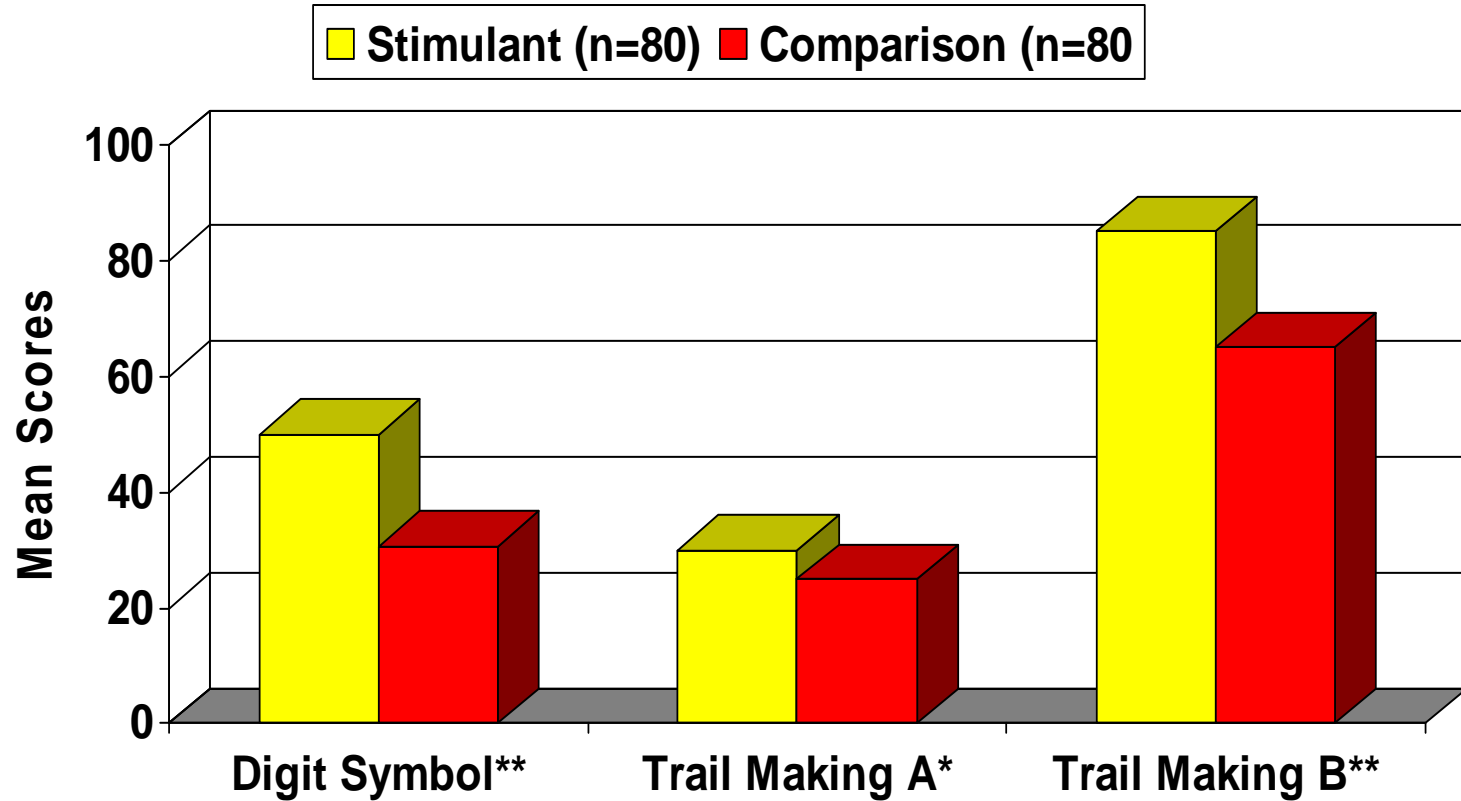
LAARC



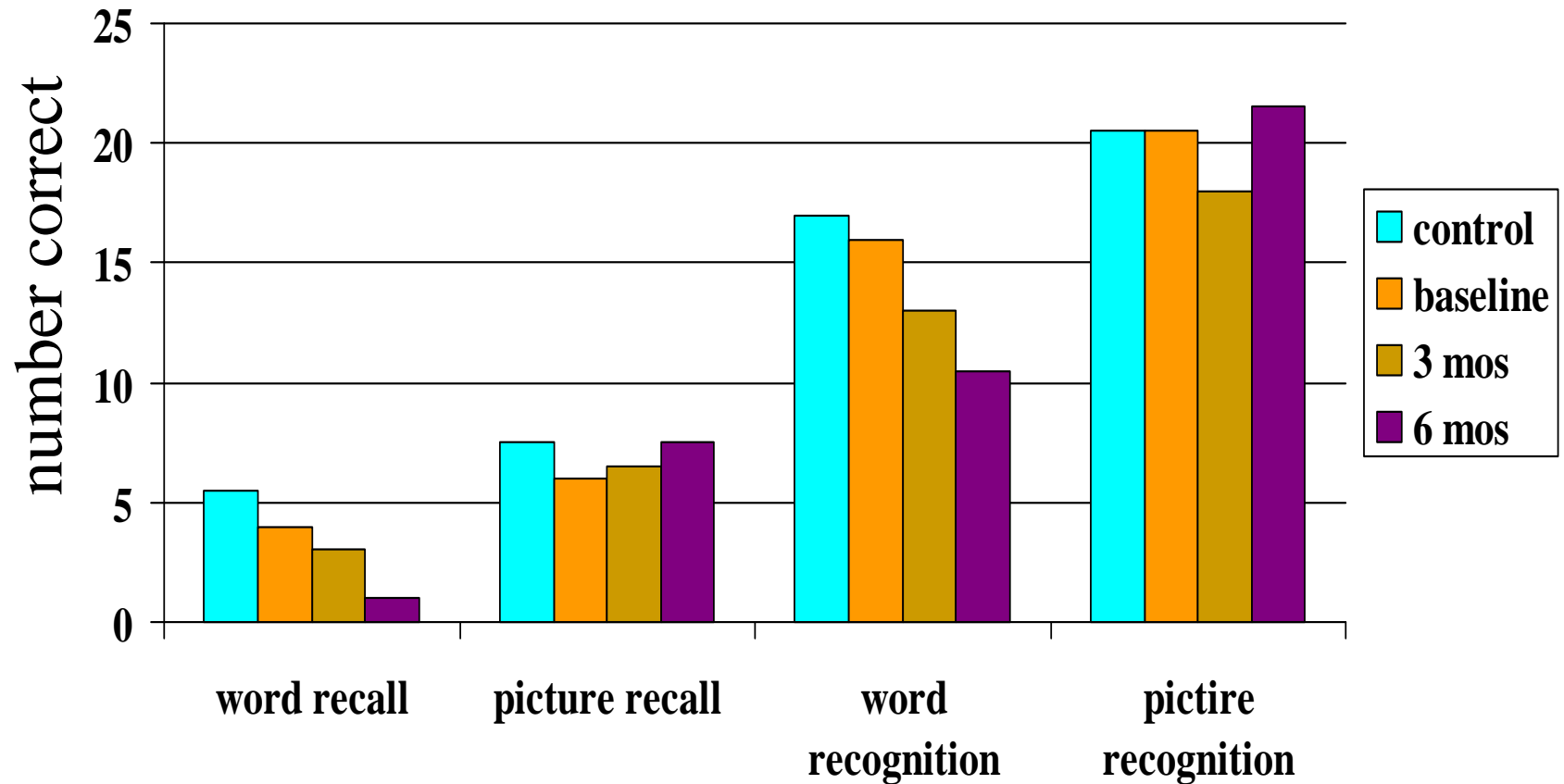
Memory Difference between Stimulant and Comparison Groups



Differences between Stimulant and Comparison Groups on tests requiring perceptual speed



Longitudinal Memory Performance



Summary

- Until the person withdraws, there is no way to tell if mental health issues are primary or secondary
 - Treat the symptoms
 - Maintain safety
 - Diagnose after the person becomes stable
 - Structure the environment and treatment to compensate for deficits
 - Use repetition and pictures
 - Ensure calm environment